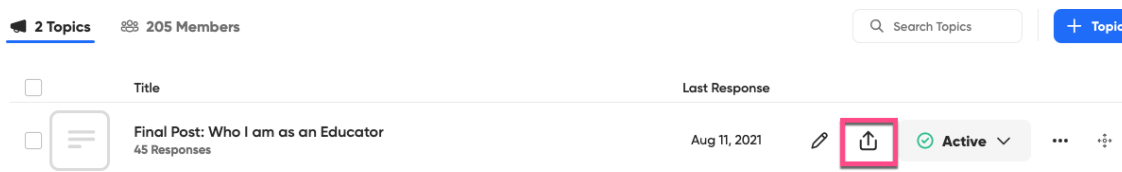


How to Embed Items in D2L

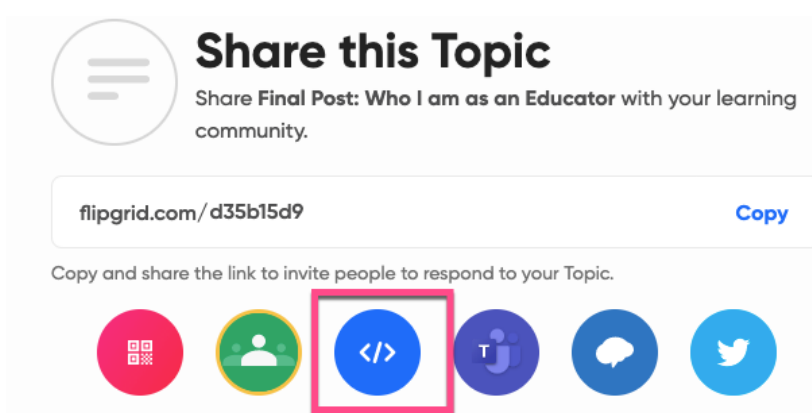
Embedding objects means that learners are able to interact with external items inside their D2L course shells rather than having to follow links and open new windows. While not every item can be embedded, many popular objects can be added with a few simple steps. In this document, we highlight embedding Flipgrids and Padlets. For reference, these same steps may be followed for most items you find online that offer an embed code under their sharing options.

Flipgrid

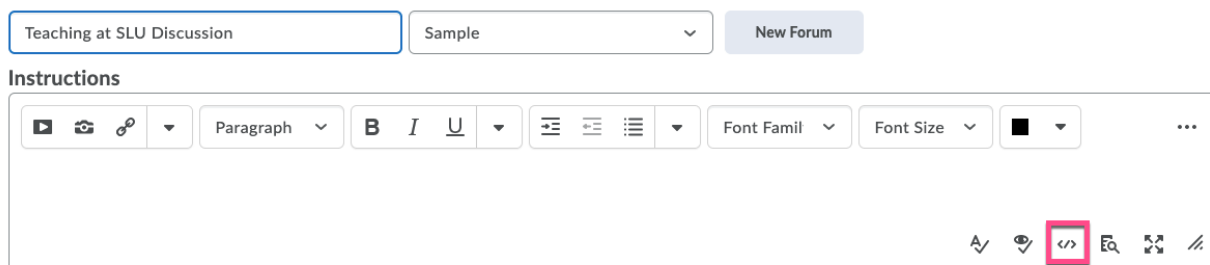
1. After you have created your grid in Flipgrid, select the **Share** option, which looks like an arrow coming out of a box.



2. On the **Share this Topic** screen, select the embed code generator: the blue icon with this symbol: `</>`. This will automatically copy the embed code for you to be able to paste it.



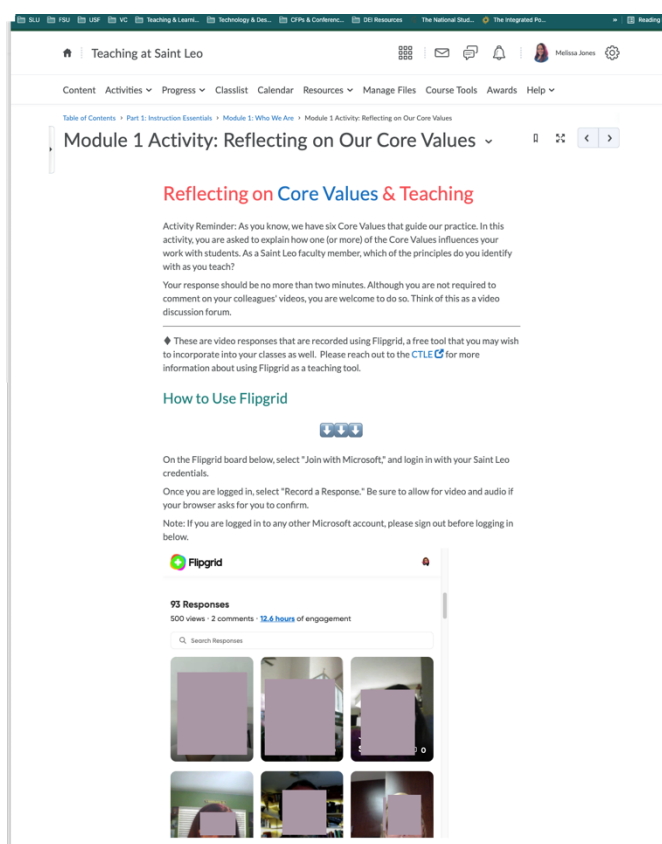
3. Once you have the code copied, go to the window/tab where you have D2L open.
4. Determine where in D2L you want the Flipgrid - for example, in the content area or a discussion topic. Select the **HTML Source Editor** `</>`. Note: If the `</>` is not at the bottom of the text box, it may be on the top, in a second row, depending on your device and where you are in D2L.



5. Once open, paste the embed code into the **HTML Source Editor** and **Save**.



6. The Flipgrid is now embedded in D2L, and you students should be able to post their video responses. *They may need to login with their Saint Leo Microsoft accounts. The image shows how an embedded grid displays in D2L.

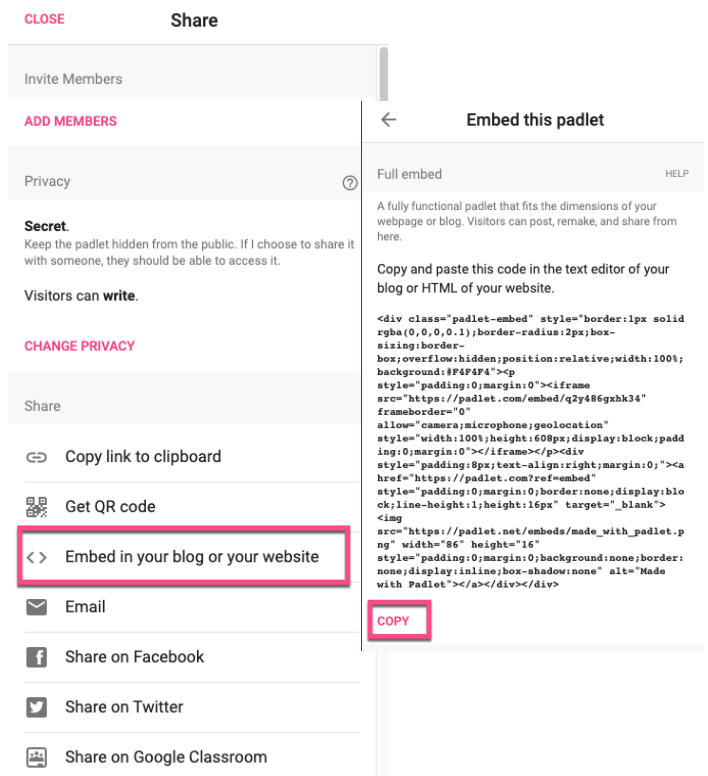


Padlet

1. After you have created your Padlet, select the **Share** option.

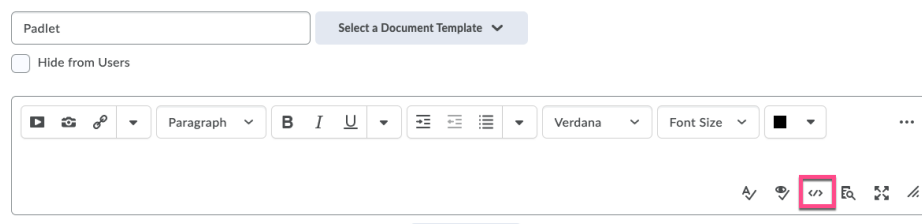


2. On the **Share** screen, select **< > Embed in your blog or your website**.
3. **Copy** the embed code.
4. Once you have the code copied, go to the window/tab where you have D2L open.

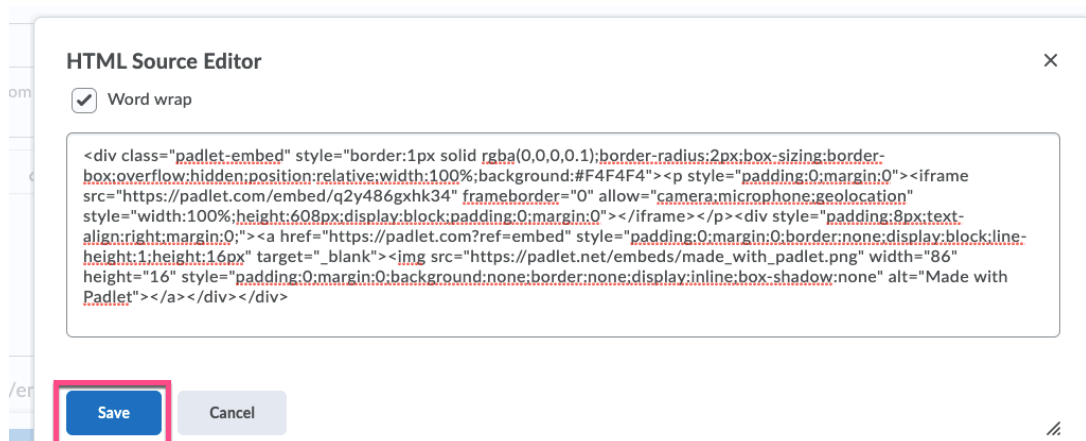


5. In D2L determine where you want the Padlet - for example, in the content area or a discussion topic. Select the **HTML Source Editor </>**

Create a File in "Creating Discussions, Quizzes, & Assignments"



6. In the **HTML Source Editor**, paste the embed code and **Save**.



7. This embeds the Padlet into D2L. Your students will be able to add their responses. The image below shows how an embedded Padlet displays in D2L.

